



# COMPANY PROFILE





# ABOUT US

RIDA Group has been founded since March 1993 in Sudan, and ever since we have been consistently thriving and working toward excellence in our products and services. The group has a set of products and services related to Natural Resources, including Mining, Engineering and Construction. The company has an extensive experience and knowledge in the field of Natural Resources Exploration, Exploitation, Engineering and Development.

We put our employees at the core of our mission, with over 1,000 employees around Africa. We are committed towards responsibly developing areas and increasing welfare across communities with long-term returns for RIDA Group and ensured growth prospects.

## VISION

*“We aspire to be one of the top five mining companies in Africa”*



Our view into the future is the core of our success. Our inspiration is to construct an all-inclusive competitive mining company, with a broad portfolio in whole mining value chain and growing successfully all over Africa.

## MISSION

*“Maximizing wealth through sustainable mining activities”*

Our mission is working together to provide sustainability, stability, prosperity and health care through stable leverage of Mining turning natural resources into capital and sustainable development that will enable partners to achieve their opportunities for growth.

## STRATEGIC OBJECTIVES

### Development of a Diversified Portfolio

Seeking to diversify the corporate in accordance with market analysis and potential opportunities, by engaging in new business areas.

### Promote sustainable Management

Absolute adherence to global and national standards by fulfilling human development goals and at the same time maintaining the capacity of the environment that provides natural resources and ecological services on which the economy and society rely.

### Achieving Excellence in Operation

Working on waste management and use of new equipment to achieve optimum operating performance.

### Sustainable Human Resources With High Performance

The production of highly productive and efficient man power through the acquisition of managerial, technological and leadership resources and the retention of expertises in order to build the ideal workforce.

## VALUES

*Human First is our core value, that will be considered among all our activities.*

- ▶ Health and safety of our employees
- ▶ Suppliers
- ▶ Host Communities
- ▶ Partners
- ▶ Environment

## RIDA CONTRIBUTION IN SUDAN ECONOMY

Over the years, RIDA has always played a significant role in Sudan's economy as the first private mining company worked in gold mining. In addition to be the first company in Sudan to introduce processing of artisanal gold tailings.

RIDA tailings operations inspired companies and prospectors to pursue this sector , according to estimates, over 3 million have been working in Sudan mines nowadays.



# MILESTONES AND ACHIVEMENTS :

<p><b>1993</b></p> <p>RIDA Established</p>	<p><b>1996</b></p> <p>Chromium exploration in Angassana Sudan</p>	<p><b>2000</b></p> <p>Acquisition of gold exploration block in Alabediya, Sudan</p>	<p><b>2003</b></p> <p>Drilling section Establishment</p>
<p><b>2007</b></p> <p>Alabediya heap leach plant construction started</p>	<p><b>2009</b></p> <p>Alabediya heap leach plant production started (1st gold capacity of 3000 tons/day)</p>	<p><b>2011</b></p> <p>Artisanal mining tailing re-processing methodology was introduced in Sudan</p>	<p><b>2013</b></p> <p>Emirates Company Acquisition</p>
<p><b>2014</b></p> <p>Acquisition of gold exploration block in Agurdate, Eritrea</p>	<p><b>2014</b></p> <p>CIL plant started production (Capacity of 1500 ton/days)</p>	<p><b>2015</b></p> <p>2nd heap leach plant started production (Capacity of 3000 tons/day)</p>	<p><b>2016</b></p> <p>Sutrebab mine feasibility study</p>
<p><b>2017</b></p> <p>Acquisition of gold exploration block in Kerkebet, Eritrea</p>	<p><b>2018</b></p> <p>Gold project partnership in Guinea</p>	<p><b>2018</b></p> <p>REMEDI Engineering establishment</p>	<p><b>2019</b></p> <p>3 Gold blocks Acquisition in Guinea</p>

## RIDA IN NUMBERS :



# GROUP SUBSIDIARIES

## RIDA Engineering and Construction

- o Location: Sudan.
- o Commodities: Gold and Chromium.
- o Number of employees: 50+
- o License Area: 751 Km2
- o RC Drilling: 98,000 meters
- o Core Drilling: 18,800 meters
- o Trenches: 80,450 meters

## RIDA MINING

- o Location: Sudan.
- o The company focus on artisanal gold tailings processing.
- o Processing plants:
  - 1,500 ton/day CIL Plant
  - 15,000 ton/month VAT Plant
- o Number of employees: 150+

## Emirates Mining

- o Location: Sudan
- o Acquired an exploration block in Red Sea state in Sudan.
- o It has two mines.
- o License Area: 881 Km2
- o RC Drilling: 16,640 meters
- o Core Drilling: 540 meters
- o Trenches: 10,270 meters

## ROHAX Mining

- o Location: Morocco
- o Potential investment prospects for the Moroccan mining industry are currently being explored.
- o RC Drilling: 1,698 meters
- o Trenches: 970 meters

## ROHAX Trading

- o Location: United Arab Emirates.
- o Provides supply chain services for mining raw materials (procurement and logistics).

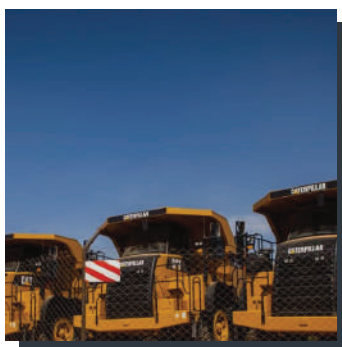
## RIDA Engineering and Construction-Eritrea

- o Location: Eritrea
- o Acquired an exploration license at Kerkebet .
- o Number of employees: 20
- o License Area: 1065 Km2
- o Trenches: 11,148 meters



**UMDURMAN MINING**

- o Location: Sudan.
- o Main focus on gold mining: alt has two mines (Alsalam and Sutribab) .
- o Working also in artisanal rock acquisition.
- o Processing Plants:
  - i) 3,000 tons/day heap leach(CIC) Plant.
  - ii) New on going project: 1,000 ton/day CIL Plant to process both artisanal rock and Sutribab mine ore.
  - iii) New on going project: CIC expansion to be 6,000 ton/day.
- o Number of employees: 500+



**REMED Engineering**

REMED Engineering is a leading company specialized in delivering mining technology, engineering projects, procurement, construction and commissioning services,

- o Location: Sudan
- o Executed Projects Capital: 20+ Million USD
- o No of Projects: 10+ projects
- o No of Clients: 10+ clients
- o No of employees: 30+

**ROHAX International**

The company has three subsidiaries in Guinea:

I. Manding Gold company

- o License: Exploration
- o License Area: 42 Km2
- o Location: Guinea

II. Stellar Guinea company

- o License: Exploration
- o License Area: 100 Km2
- o Location: Guinea

III. R&R Company

- o Location: Guinea
- o Main focus: Gold mining
- o License: Exploitation
- o License Area: 7.52 Km2
- o Processing Plants: On going project: 1,000 ton/day VAT Leach Plant.

## OUR SERVICES

***RIDA provide the following services through its subsidiary REMED Engineering:***

### **EPCC Projects**

*REMED engineering offers Engineering, Procurement Construction and Commissioning services for mining projects. Our engineering team consists of highly trained and talented designers from different engineering backgrounds and have worked in designing several precious-elements extraction projects, ensuring the customers satisfaction through implementing the cutting-edge technology applying the latest international standards in mining engineering.*



### **MINING INTELLIGENCE**

*REMED assists investors in decision-making processes. We provide data collection services, reserve evaluation and feasibility study, enabling our partners to have a precise look-ahead into the opportunity on hands. Our scope is expanded to preparation of business model and develop risk management plan.*

### **Research and Development**

*Research and development play an important role in the innovation process and is also a key factor in developing new technologies. Currently, the focus of research and development is on down-stream activities, especially on the extractions and metallurgical techniques, as there is a demand for new innovative technologies that take into considerations the environmental impacts, water, energy and emission constrains.*

## Drilling

*Requirements for safety, quality and cost are never static! that is why we pivot with you to provide the best options when it comes to choosing drilling services. We combine rotary steering with our information evaluation tools and advanced software to maximize the benefits of our reservoir navigation services. Our fleet consists of three core drilling and three reverse circulation machines. Our drilling crew have variety of experiences with different nationalities.*

## Exploration

*Explorations activities are currently conducted in three countries with six blocks in total, including two blocks in Sudan, three blocks in Guinea and one block in Eritrea.*



## LABORATORY SERVICES

- Mineral assay and testing
- Sample preparation facilities

**RIDA**  
GROUP

## Consultancy

*We provide professional multidisciplinary services to support all aspects of mine development, from exploration and feasibility to design, construction supervision, mine management, operational assistance and staff training. Additionally, our team has expert members to identify and troubleshoot operations-related difficulties and offers innovative solutions.*

## SOCIAL RESPONSIBILITIES

*We respect the human being of the society in which we work and promote sustainable and long-term growth. Our strategic value is to consider human first. Through every field, job opportunities, team development, interactions and our policies. Our goal is to communicate openly and transparently with our communities to listen and collaborate globally and locally, and facilitate the areas we operate in with all their demands and aspirations for a better life.*

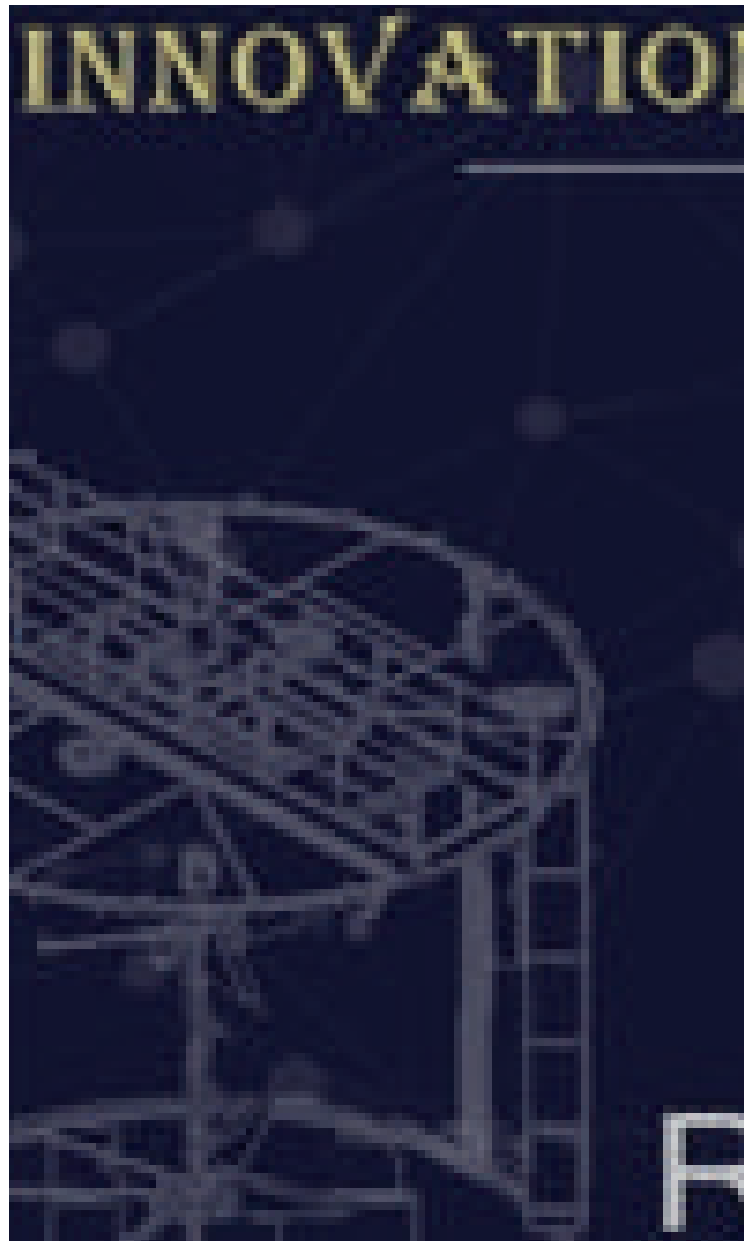
*RIDA Group support the social infrastructure of the communities surrounding operations. The Company encourages and support its workforce at all rates to consider and acknowledge sufficient funding and support for environmental initiatives that are made available and sponsored by them.*

## ENVIRONMENT

*We aim to minimize our impact to the environment as much as possible to develop solutions to decrease risk and make it a safe environment for all.*

*We follow emerging trends in the environmental practices and aiming to achieve and maintain the highest standards of health, safety and environmental precautions.*

**RIDA**  
GROUP



## SAFETY

*We remain committed to prioritizing all safety techniques and health care quality. The wellbeing and welfare of our staff and those around us is one of our core priorities.*

*The Company has developed core compliance initiatives and practices, which include procedures, policies and training courses for all staff of emergency management services, performance monitoring and risk evaluation processes.*

## INNOVATION IN MINING

*The future for us lies on innovation—to succeed and deliver superior value. We at RIDA always work on scientific research and looking forward to integrate innovative technologies into our core business operations. We developed an innovative design techniques.*

# N IS THE FUTURE



# REMED



## Get In Touch



[www.ridagroup.com](http://www.ridagroup.com)



[info@ridagroup.com](mailto:info@ridagroup.com)



+249 185 216 681